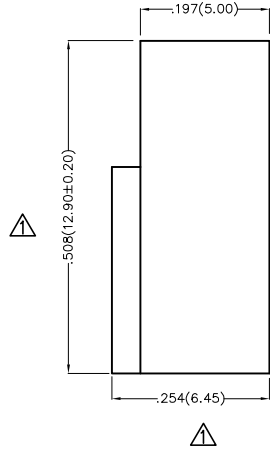
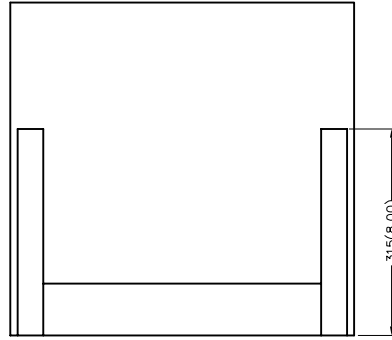


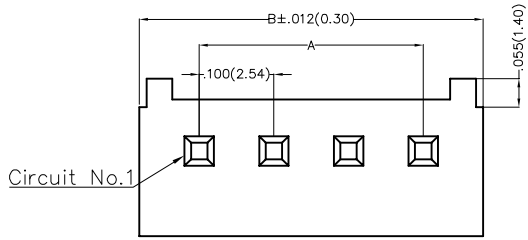
1 2 3 4 5 6 7 8

REV	LOCATIONS	DESCRIPTION	DATE	REVISER	APPD
1	△	Size changes	22/MAR/22	MATT	CHERRY

Electrical  
 Temperature Range—Operating: -25°C~+85°C  
 Material  
 Housing: PA66( UL 94V-0)  
 Applicable Terminal: FT25401  
 Mates With: FWF25401,FWF25402,FWF25403Series



Circuits (n)	Part No.	Dimensions(in/mm)	
		A	B
2	FHG25401-S02M2W5B	.100(2.54)	.228(5.80)
3	FHG25401-S03M2W5B	.200(5.08)	.328(8.34)
4	FHG25401-S04M2W5B	.300(7.62)	.428(10.88)
5	FHG25401-S05M2W5B	.400(10.16)	.525(13.33)
6	FHG25401-S06M2W5B	.500(12.70)	.625(15.87)
7	FHG25401-S07M2W5B	.600(15.24)	.725(18.41)
8	FHG25401-S08M2W5B	.700(17.78)	.825(20.95)
9	FHG25401-S09M2W5B	.800(20.32)	.925(23.49)
10	FHG25401-S10M2W5B	.900(22.86)	1.025(26.03)
11	FHG25401-S11M2W5B	1.000(25.40)	1.125(28.57)
12	FHG25401-S12M2W5B	1.100(27.94)	1.225(31.11)



Ordering Information

FHG 254 01 — S XX M 2 W5 B  
 1 2 3 4 5 6 7 8 9

1	Category FHG—Housing	2	Series Number 254—Pitch2.54mm	3	Distinction No. 01	4	Row Option S—Single row	5	Circuits XX
6	Entry Type M—Male	7	Material—Resin 2—PA66	8	Color—Resin W5—Natural	9	Packaging B—PE Bag		

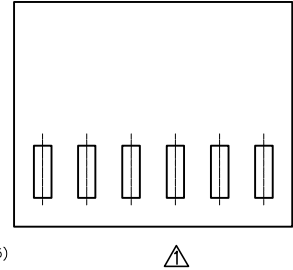
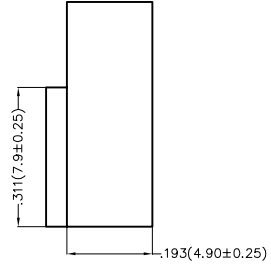
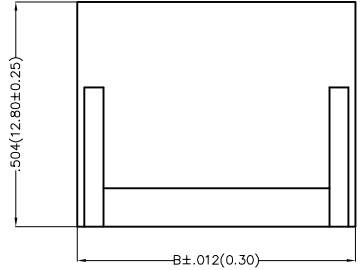
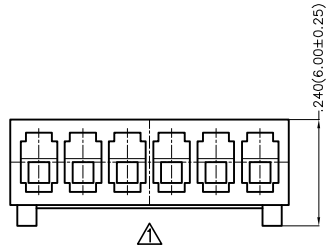
 THIRD ANGLE PROJECTION	GENERAL TOLERANCES (UNLESS SPECIFIED)		APPROVE BY FRANK	DATE 25/JUN/13	PART NO. FHG25401-SXXM2W5B	ITEM NO. FHG25401	 Leader Of Industry	
	DESIGN UNITS Inch (metric)	X.±.012(0.30)	X.±5'	CHECKED BY JACOB	DATE 25/JUN/13	TITLE Wire to Board Pitch 2.54mm(Housing)		REV 1
SCALE 5:1	SIZE A4	X.XX±.006(0.15)	.XX±1'	DRAWN BY CHERRY	DATE 25/JUN/13	THIS DRAWING CONTAINS INFORMATION THAT IS PROPRIETARY TO TXGA INDUSTRIAL ELECTRONICS(S.Z)CO.,LTD AND SHOULD NOT BE USED WITHOUT WRITTEN PERMISSION		

1 2 3 4 5 6 7 8

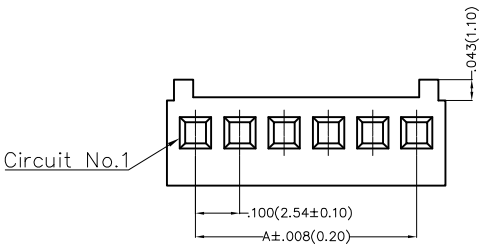
1 2 3 4 5 6 7 8

REV	LOCATIONS	DESCRIPTION	DATE	REVISER	APPD
1		1.Add View 2.Update dimensions and tolerances	29/MAY/24	MATT	LEO

Electrical  
 Temperature Range—Operating: -25°C~+85°C  
 Material  
 Housing: PA66( UL 94V-0)  
 Applicable Terminal: FT25401  
 Mates With: FWF25401,FWF25402,FWF25403Series



Circuits (n)	Part No.	Dimensions(in./mm)	
		A	B
2	FHG25401-S02M2W1B	.100(2.54)	.228(5.80)
3	FHG25401-S03M2W1B	.200(5.08)	.328(8.34)
4	FHG25401-S04M2W1B	.300(7.62)	.428(10.88)
5	FHG25401-S05M2W1B	.400(10.16)	.525(13.33)
6	FHG25401-S06M2W1B	.500(12.70)	.625(15.87)
7	FHG25401-S07M2W1B	.600(15.24)	.725(18.41)
8	FHG25401-S08M2W1B	.700(17.78)	.825(20.95)
9	FHG25401-S09M2W1B	.800(20.32)	.925(23.49)
10	FHG25401-S10M2W1B	.900(22.86)	1.025(26.03)
11	FHG25401-S11M2W1B	1.000(25.40)	1.125(28.57)
12	FHG25401-S12M2W1B	1.100(27.94)	1.225(31.11)
13	FHG25401-S13M2W1B	1.200(30.48)	1.325(33.65)
14	FHG25401-S14M2W1B	1.300(33.02)	1.425(36.19)
15	FHG25401-S15M2W1B	1.400(35.56)	1.525(38.73)
16	FHG25401-S16M2W1B	1.500(38.10)	1.625(41.27)



Ordering Information

FHG 254 01 — S XX M 2 W1 B  
 1 2 3 4 5 6 7 8 9

1	Category FHG—Housing	2	Series Number 254—Pitch2.54mm	3	Distinction No. 01	4	Row Option S—Single row	5	Circuits XX
6	Entry Type M—Male	7	Material—Resin 2—PA66	8	Color—Resin W1—White	9	Packaging B—PE Bag		

 THIRD ANGLE PROJECTION DESIGN UNITS Inch (metric) SCALE 5:1 SIZE A4	GENERAL TOLERANCES (UNLESS SPECIFIED) X.±.012(0.30) X'.±5' X.X±.008(0.20) .X'±2' X.XX±.006(0.15) .XX'±1' X.XXX±.004(0.10) .XXX'±0.5'		APPROVE BY FRANK CHECKED BY JACOB DRAWN BY CHERRY	DATE 25/JUN/13 DATE 25/JUN/13 DATE 25/JUN/13	PART NO. FHG25401-SXXM2W1B TITLE Wire to Board Pitch 2.54mm(Housing) THIS DRAWING CONTAINS INFORMATION THAT IS PROPRIETARY TO TXGA INDUSTRIAL ELECTRONICS(S.Z)CO.,LTD AND SHOULD NOT BE USED WITHOUT WRITTEN PERMISSION	ITEM NO. FHG25401 REV 1 SHEET NO. 1/1	 Building Technology Cornerstone
---	---	--	--	---	--	--	-------------------------------------

1 2 3 4 5 6 7 8